

Notice to Mariners

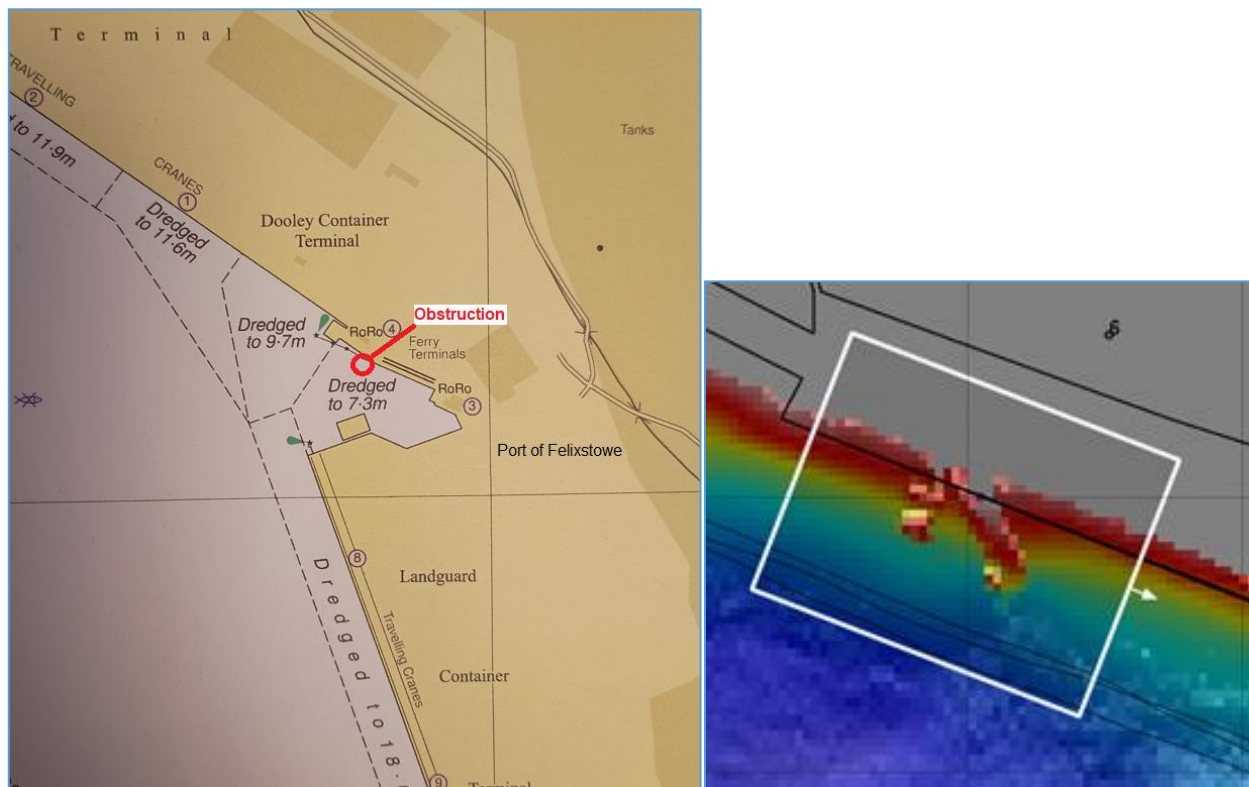
Number: 08
Year: 2025
Issued: 23 January
In force: 2023: 48, 2024: 18,53,66,67,76,77,79,80, 2025: 01,03,05,07,08

Obstruction on seabed at Felixstowe Ro-Ro Berth 3

Mariners are advised there is an obstruction on the seabed at the Port of Felixstowe Ferry Terminal in the RoRo 3 berth box, near bollard number 6.

The obstruction is at approx. 1.9m below chart datum, and measures around 4m x 1.5m in size.

Location: **51° 57.117'N 001° 18.829'E**



Use of RoRo 3 berth is restricted to no further west than bollard 5. All vessels are advised to keep a minimum of 10m clearance from the quay line when navigating in this area.

Will Barker

Marine Director (Harbour Master)