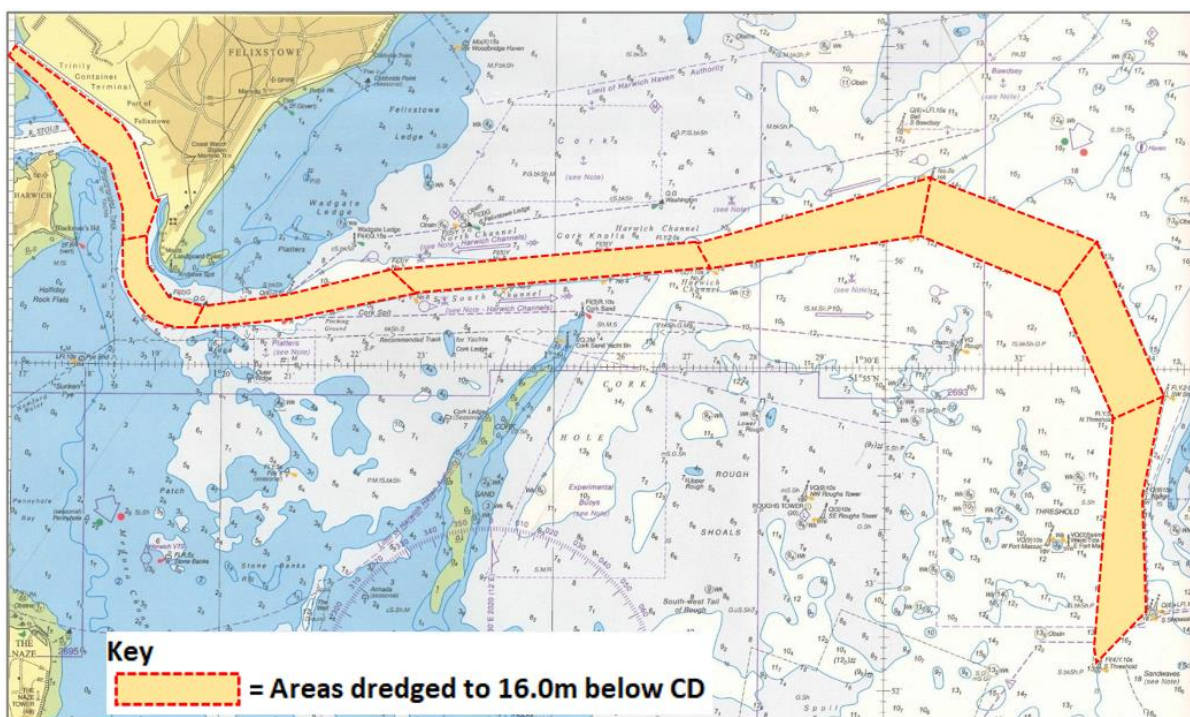


**Number:** 48  
**Year:** 2023  
**Issued:** 26 July 2023  
**In force:** 2017: 02, 2022: 21, 2023: 10,17,21,45,46,48

## Harwich Deep Water Channel & Harbour - new dredge depth

Mariners are advised that following the completion of a successful capital dredging campaign, the **Harwich Deep Water Channel and Main Harbour** (see diagram below) has been dredged to **16.0m below Admiralty Chart Datum**, with immediate effect.



**Diagram of Harwich Deep Water Channel and Harbour (not for navigation)**

There are some minor changes to the channel limits on the south side of the Beach End turn and at the South Threshold Buoy. Updates to Admiralty charts and publications are expected to follow in due course.

For further information or navigational advice contact **Harwich VTS (VHF 71)**.

Will Barker

Marine Director (Harbour Master)